



SOLAR FLEX



SOLAR FLEX™ KITS FEATURE A NEW SOLAR MODULE THAT IS AERODYNAMIC AND DURABLE – A VERSATILE SOLAR BATTERY CHARGER THAT CAN AVOID COSTLY CUSTOM MOUNTS



GP-FLEX-200



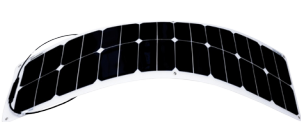
GP-FLEX-100



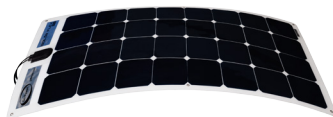
GP-FLEX-50



GP-FLEX-30



GP-FLEX-50E



GP-FLEX-100E

MC4 branch connectors

Go Power! Solar Flex™ kits use flexible, high-efficiency back-contact solar modules that conform to almost any surface. These kits use high-efficiency, marine-grade solar modules - a versatile battery charging solution that:

- avoids custom mounts (100 and 50 watt modules curve up to 30 degrees)
- can be affixed with adhesive or screws
- provides a durable surface (modules are less than 1/8" / 3mm thick)
- is ideal for lightweight RVs (modules are 82% lighter)

GP-FLEX-200 / 100 kits include high-efficiency monocrystalline solar panel(s) (200/100 watts), GP-PWM-30 solar controller, MC4 connectors and mounting hardware.

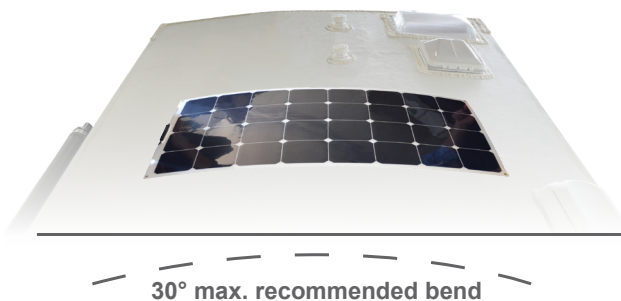
GP-FLEX-30 kit includes 1x high-efficiency monocrystalline solar panel (30 watts), new GP-PWM-10 (10 amp) solar controller, MC4 connectors and mounting hardware.

GP-FLEX-50 kit includes 1x high-efficiency monocrystalline solar panel (50 watts), new GP-PWM-10 (10 amp) solar controller, MC4 connectors and mounting hardware.

GP-FLEX-100E expansion kit includes 1x high-efficiency monocrystalline solar panel (100 watts), MC4 branch connectors and cable.



REPRESENTED IN YOUR REGION BY:



30° max. recommended bend



Solar Panel

SPECIFICATIONS	GP-FLEX-200 (2 X FLEX-100)	GP-FLEX-100	GP-FLEX-50	GP-FLEX-30	GP-FLEX-100E	GP-FLEX-50E
Cell type		Monocrystalline	Monocrystalline	Monocrystalline	Monocrystalline	Monocrystalline
Rated Power (Pm)	200 W	100 W	50 W	30 W	100 W	50 W
Maximum Power Voltage (Vmp)	17.5V	17.5V	17.5V	17.5V	17.5V	17.5V
Maximum Power Current (Imp)	11.36A	5.68A	2.88A	1.70A	5.68A	2.88A
Open Circuit Voltage (Voc)	21.0V	21.0V	19.0V	21.0V	21.0V	19.0V
Short Circuit Current (Isc)	12.56A	6.28A	3.04A	1.88A	6.28A	3.04A
Max System Voltage	600VDC	600VDC	600VDC	600VDC	600VDC	600VDC
Weight	5.82 lbs (1.7 kg)	2.9 lbs (1.35 kg)	1.6 lbs (0.72 kg)	1.1 lb (0.49 kg)	2.9 lbs (1.35 kg)	1.6 lbs (0.72 kg)
Dimensions		44.6 x 21.4 x 0.1 in (1134 x 544 x 3 mm)	42.1 x 11.3 x 0.1 in (1070 x 286 x 3 mm)	24.4 x 14.96 x 0.1 in (620 x 380 x 3mm)	44.6 x 21.4 x 0.1 in (1134 x 544 x 3 mm)	42.1 x 11.3 x 0.1 in (1070 x 286 x 3 mm)

Digital Solar Controller

SPECIFICATIONS*	GP-PWM-30	GP-PWM-10
Nominal System Voltage	12V	12V
Max Solar Array Current	30A	10A
Battery Voltage Range	6V – 15.5V	6V – 15.5V
Max. Solar panel input voltage	28V	28V
Operating Consumption	6mA	6mA
Display Consumption	10mA	10mA
Temp. Compensation	- 24mV/°C / -13mV/°F	- 24mV/°C / -13mV/°F
Operating Temperature	- 40 to 85°C / - 40 to 185°F	- 40 to 85° C / - 40 to 185° F
Humidity	99% N.C.	99% N.C.
Dimensions (H x W x D):	108 x 190 x 35 mm; 4.25 x 7.48 x 1.38 in	100 x 102 x 29 mm; 3.94 x 4.02 x 1.14 in
Weight	300 g; 10.6 oz	178 grams; 6.3 oz
Maximum Wire Gauge:	#4 AWG	#4 AWG
Warranty	5 years	5 years
Protection	Battery Reverse Polarity, Solar Array Reverse Polarity, Over temperature, Over Current	

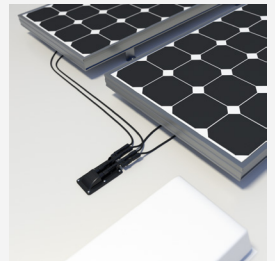


Specifications may be subject to change.
 "Carmanah" and Carmanah logo are trademarks of Carmanah Technologies Corp.
 Carmanah is a Canadian public corporation - TSX-CMH

OPTIONAL CABLE ENTRY PLATE

Use our Cable Entry Plate with a Go Power! Solar Kit to run your wire where you want and reduce exposed cables on the roof.

- Built for easy expansion
- Cuts installation time
- Protects cable connections
- Clean and tidy wire configuration
- Eliminates possibility of leaks
- Connects with industry standard MC4 cables (included in Go Power! kits)
- 5 year warranty



GP-CEP

Front Profile 100/50 watt

Front Profile 30 watt

